

The Thomas Centre

Our 2 bedroomed Houses

Mary's & Janet's Houses

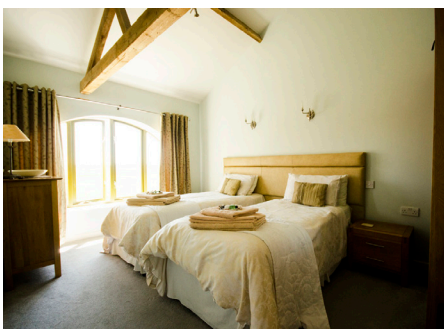
Our 2 bedroomed House (sleeping up to 4)



Mary's & Janet's House

- Each with **2 twin bedrooms** (beds can be joined together).
- Comfortable open plan dining/living space with a beautiful kitchen.
- Contemporary **large bathroom**, with an enclosed shower and a full-sized bath.
- Large hallway with **downstairs WC** and cloakroom.

The colour schemes in Mary's and Janet's are bright and contemporary. With the best views, these two bedroom houses are ideal for smaller families or more independent adults.



Don't forget Josie's Corner, the go kart track, the woods, Bill's Play Barn and so much more.....All on a private estate, an oasis far from the madding crowds, in a non-judgemental environment. There is just one rule at The Thomas Centre: *no need to apologise, no need to explain.*